



**City of Mission Bus Tour
Wednesday, September 27, 2017**

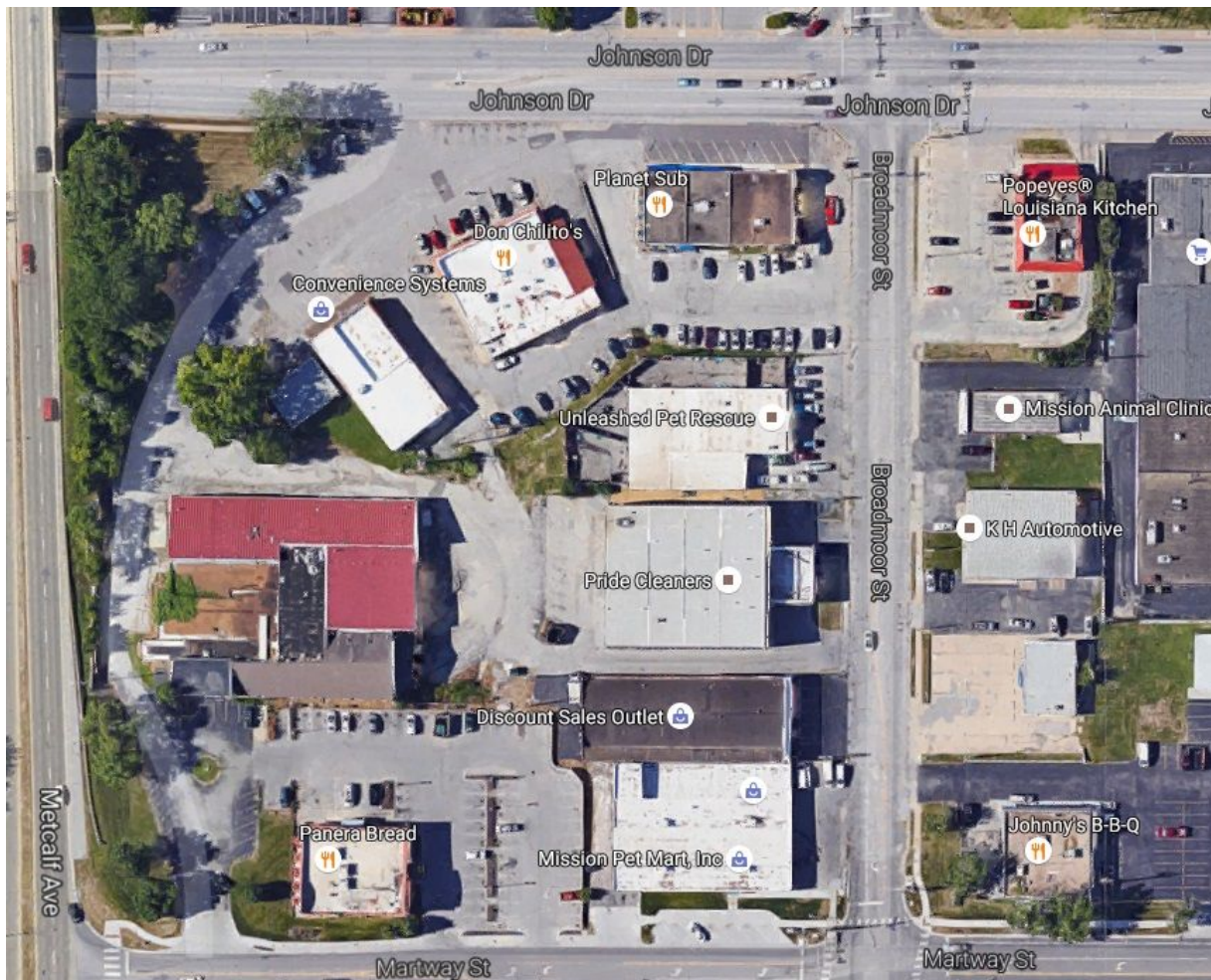
Itinerary

4:15 p.m. Meet in parking lot at Mission Family Aquatic Center
4:30 p.m. Bus departs

Tour destinations:

1. Broadmoor Street between Johnson Drive and Martway Street
2. Broadmoor Park
3. Broadmoor future street plan in Mission West Gateway Form Based Code
4. Foxridge Drive Phase I
5. Foxridge Drive Phase II
6. Dearborn Street Chip Seal
7. Martway Street at Beverly Avenue, flood plain, Rock Creek District
8. City owned parking lots on Outlook Street, Rock Creek District
9. Active erosion example Martway Street behind Mission Bowl
10. Stormwater failure at W. 61st Terrace
11. Andersen Park (If time allows)

1. Broadmoor Street between Johnson Drive and Martway Street



2. Broadmoor Park

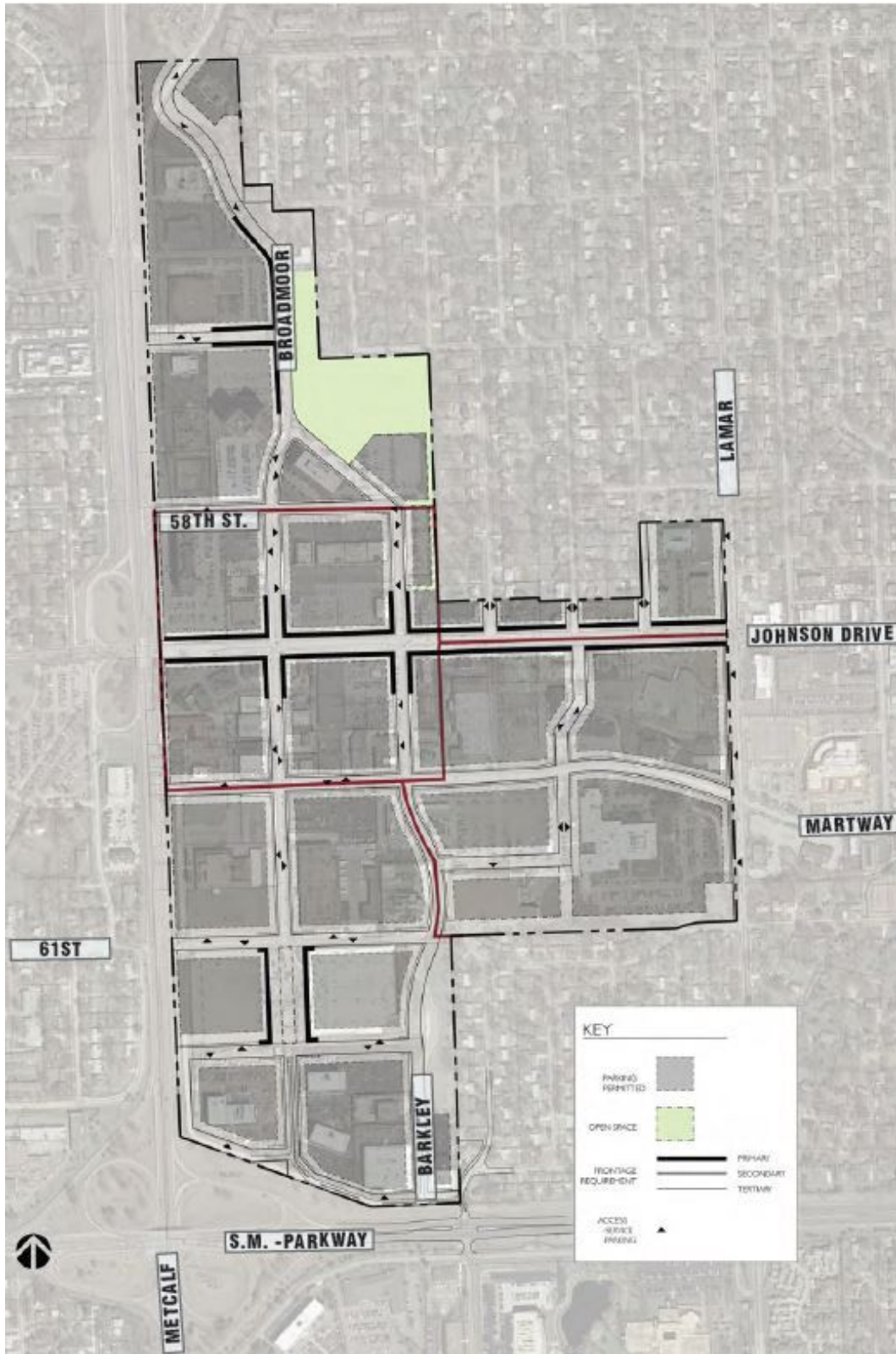


Excerpt about Broadmoor Park from the Parks and Recreation Master Plan:

Strengths: Broadmoor Park is surrounded by commercial buildings to the south and west of the site and residential housing to the north and east and provides good recreational opportunities to the community. The site is connected to surrounding pedestrian sidewalks and vehicular parking making it easily accessible to the community and a good location for the City's annual Summer Family Picnic.

Opportunities: An abundance of extra open space makes Broadmoor Park a good location for expansion of programming. Broadmoor Park holds the potential for relocated tennis courts or other upgraded athletic facilities. A former parking lot under the soccer field creates safety concerns as rocks find their way to the surface. This area should be renovated to create more opportunity for safe, usable rectangle/diamond space. Residents have identified sand volleyball courts, horseshoe pits, a dog park and an outdoor amphitheater as potential improvements for the site.

3. Broadmoor Future Street Plan in West Gateway Form Based Code



4. Foxridge Drive Phase I

Foxridge Drive, looking south



Stormwater failure at entrance to Hillsborough Apartments



Foxridge Drive, looking south



5. Foxridge Drive Phase II

Foxridge drive at 51st Street, looking north



Looking east, toward Quik Trip



Looking east, toward Quik Trip



6. Dearborn Street Chip Seal

Looking south toward 51st Street



Looking south on Dearborn St

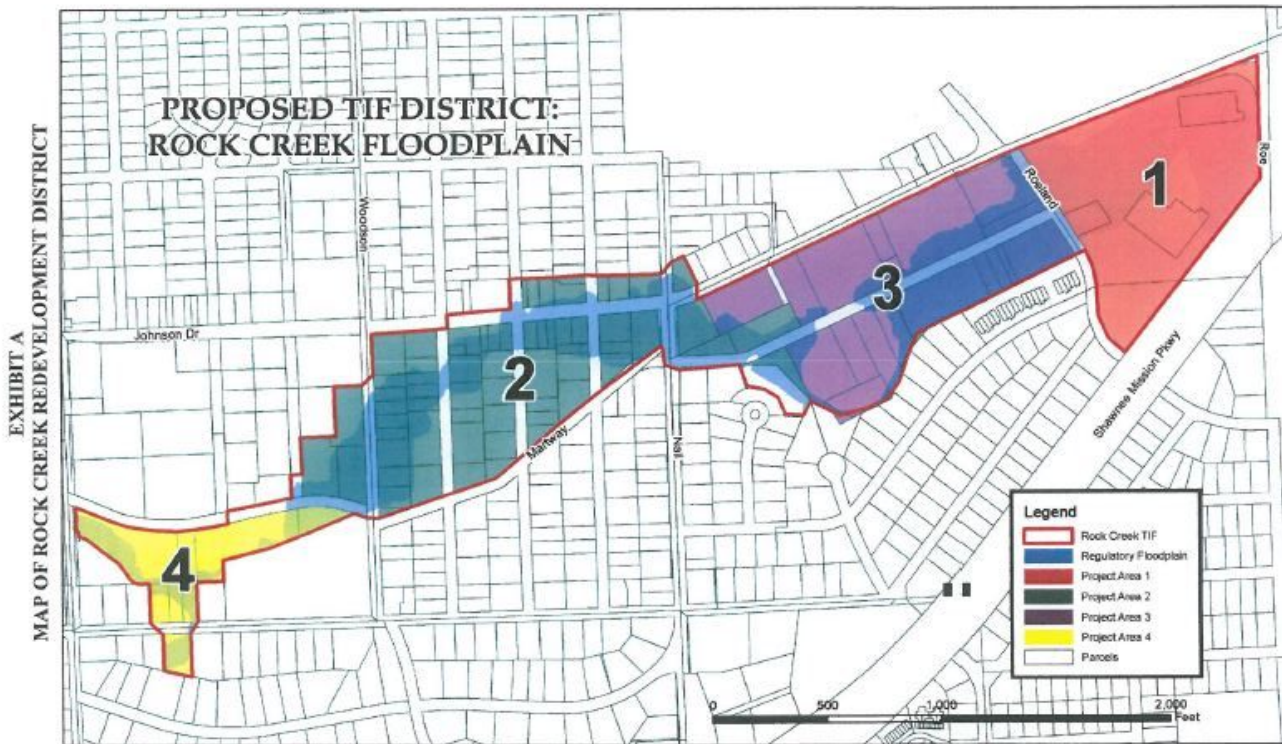


Close up of chip material



7. Martway Street at Beverly Avenue Flood Plain and Rock Creek District

Looking west toward Lamar Ave, just north of the tennis courts along Rock Creek



8. City owned parking lots on Outlook Street

Parking and trail, looking east



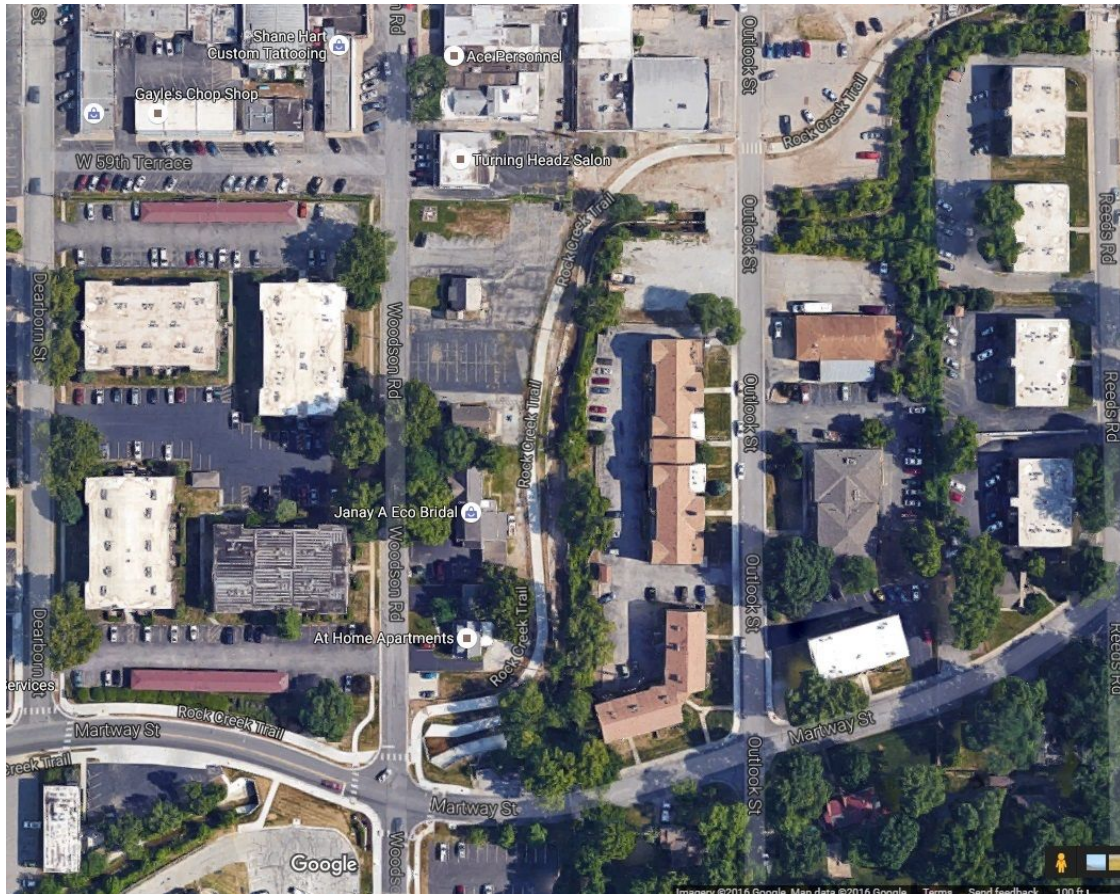
Outlook Street, looking north



Former Harleywoods Building and trail, looking west



Rock Creek and gravel lot, looking west



9. Active erosion example Martway Street and W. 60th Terrace



10. Stormwater failure at W. 61st Terrace

Previous Failure at 5820 W. 61st Terrace



New Failure at 5820 W. 61st Terrace



11. Andersen Park



Excerpt about Andersen Park from the Parks and Recreation Master Plan:

Strengths:

Andersen Park is a medium sized neighborhood park which is supported by its adjacencies to the Mission Family Aquatic Center. The large trees provide needed shade around the playground and shelter areas. Open lawn spaces provide opportunities for practices and city events such as the Backyard Campout held on site each year.

Opportunities:

Andersen Park is a highly used neighborhood park. Tennis Court removal and relocation should be considered as the creek along the western side of the site creates maintenance issues. Eliminating the tennis courts on this site would open additional space allowing for new structures and site amenities. Removal and replacement of older playground elements along with the wood mulch surfacing is needed along with sidewalk renovations to meet accessibility guidelines. Signage is needed to give the park identity as a City of Mission park. Residents have also identified sand volleyball and bocce as potential improvements for the site.

National Playground Safety Institute Public Playground Safety Standards and Guidelines

Surfacing

The surfacing under and around playground equipment is one of the most important factors in reducing the likelihood of life-threatening head injuries. Never use less than 9 inches of loose-fill material.



The perimeter of the playground should provide a method of containing the loose-fill materials. Surfacing containment walls should be highly visible.

Good drainage is essential to maintaining loose-fill surfacing. Standing water with surfacing material reduces effectiveness and leads to material compaction and decomposition.

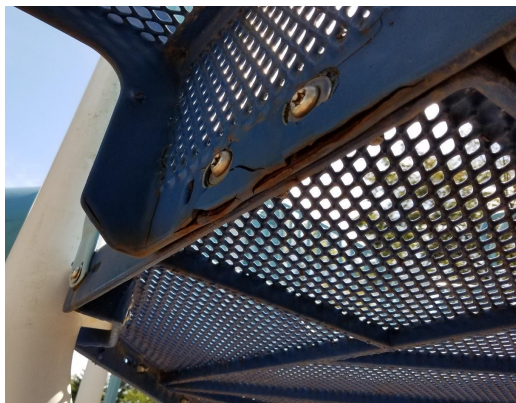


The 'use zone' for a belt swing should extend to the front and rear of a single-axis swing a minimum distance of twice the vertical distance from the pivot point and the top of the protective surface beneath it. The distance required at Andersen would be 18 feet. They are currently 11 feet.



Maintenance

Paint and other finishes should be maintained to prevent rusting of exposed metals and to minimize children playing with peeling paint and paint flakes.



Access

Every playground element should have access for a wheelchair, walker, stroller.

